

*Alfred-Almond Central School
Comprehensive Guidance Plan*



*Alfred-Almond Central School
District*

6795 Rt. 21

Almond, NY 14804

607-276-6555

Table of Contents

Mission Statement	Page 3
Rationale for School Counseling Programs	Page 3
Building Demographics	Page 4
Academic Services	Page 5
Career Exploration Services	Pages 6-9
Personal/Social Development Objectives	Pages 9-10
Implementation of Development Objectives	Page 10
School Counseling Organizational Chart	Page 11
Counseling Staff	Page 11

Alfred-Almond School Counseling Department

The goal of the Alfred-Almond Central School District Counseling Department is to advocate and provide academic, career, and social-emotional support for all students. School counselors collaborate with parents, educators, and the community to provide developmentally appropriate and comprehensive services to meet the needs of all students in order for them to become productive life-long learners.

The Rationale for School Counseling Programs

The primary goal of school counseling programs is to promote and enhance student learning through three broad and interrelated areas of student development. Each of these areas encompass a variety of desired student learning competencies, which in turn are comprised of specific knowledge, attitudes and skills, which form the foundation of the developmental school counseling program. The three areas of student development are: academic development, career development, and personal/social development. A comprehensive school counseling program is developmental and systematic in nature, sequential, clearly defined, and accountable. The program is proactive and preventative in its focus and it assists students in acquiring life-long learning skills. School counseling programs are developed by focusing on needs and issues related to various stages of student growth. There is a commitment to individual uniqueness and the maximum development in the three major areas, academic, career and personal/social.

Building Demographics

Alfred-Almond Elementary School

PK-6

The Alfred-Almond Elementary School provides instructional programs for children from Pre-Kindergarten through sixth grade and the current enrollment is 327. Counseling services are provided to students, parents, and teachers by one certified school psychologist.

Alfred-Almond Junior/Senior High School

Grades 7-12

The comprehensive school counseling program integrates academic, career, and personal/social development. Counseling, consultation, collaboration, coordination, case management, guidance curriculum, and program evaluation are the primary delivery methods in an effective school counseling program.

The purpose of a counseling program in a school setting is to promote and enhance the learning process.

Alfred-Almond Central School Academic Services

- New student orientation/meet with new students/transition
- Collaboration and consultation with teachers and parents
- Individual counseling/group counseling/skills training
- Work within multidisciplinary teams
- Make referrals for increased support if needed
- Classroom guidance and career exploration services
- Crisis intervention (individuals and small groups)

Guidance Plans Grades 7-12

Grade 7

- Individual counseling/academic advisement
- Collaboration and consultation with teachers and parents
- Classroom guidance and Career Exploration lessons
- Class selection options for 8th grade
- Make referrals for increased support if needed
- Meet with new students/assist with transition to new school
- New student orientation before new school year begins
- Academic scheduling

Grade 8

- Individual counseling/academic advisement
- Collaboration and consultation with teachers and parents
- Classroom guidance and Career Exploration inventory (Career Zone/Guidance Direct)
- Make referrals for increased support if needed
- Eighth grade parent meeting and individual follow up to complete high school plan
- Meet with new students/assist with transition to new school
- New student orientation before new school year begins
- Explore college readiness options, (i.e., ACE, AP, college/university classes)

Grade 9

- Individual counseling/academic advisement
- Collaboration and consultation with teachers and parents
- Classroom guidance and Career Exploration lessons
- Make referrals for increased support if needed
- Meet with new students/assist with transition to new school
- New student orientation before new school year begins
- Academic scheduling/course selection
- Review of graduation requirements, including importance of attendance, NCAA eligibility
- Individual advising with students/parents
- Career Exploration

Grade 10

- Individual counseling/academic advisement
- Collaboration and consultation with teachers and parents
- Classroom guidance and Career Exploration lessons
- Make referrals for increased support if needed
- Meet with new students/assist with transition to new school
- New student orientation before new school year begins
- Academic scheduling/course selection
- Review of graduation requirements, including importance of attendance, NCAA eligibility
- Individual advising with students (and parents as needed)
- Career Exploration
- Wildwood BOCES visitation

Grade 11

- Individual counseling/academic advisement
- Collaboration and consultation with teachers and parents
- Classroom guidance and Career Exploration lessons
- Make referrals for increased support if needed
- Meet with new students/assist with transition to new school
- New student orientation before new school year begins
- Academic scheduling/course selection
- Review of graduation requirements, including importance of attendance, NCAA eligibility
- Individual advising with students (and parents as needed)
- Career Exploration (Career Zone/Guidance Direct)
- Wildwood BOCES visitation
- Junior Interview
- Prepare and register students for PSAT
- Hornell High School College Fair
- College visit to local university
- SAT review classes

Grade 12

- Senior Interview (Review course selections and remaining graduation requirements)
- Hornell High School College Fair
- Assist with Scholarship searches/financial aid, form completion.
- Post Secondary options explained (College application/Job applications/resume assistance/recommendation letters/military).
- Alfred State College mini-visit
- Continued career/college exploration
- Career/college readiness skills
- Career Zone/Guidance Direct

Personal/Social Development Objectives

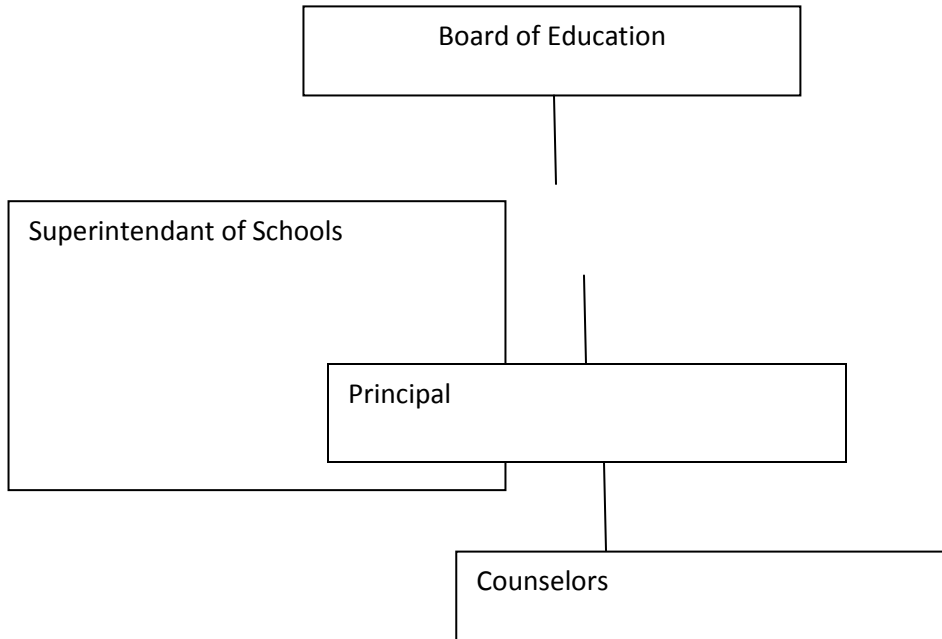
Through the work of the Alfred-Almond Central School District Counseling Department and other educators, the students in the Alfred-Almond Central School District will:

- Develop positive attitudes towards self as a unique and worth person.
- Understand that change is part of growth.
- Identify and express feelings.
- Distinguish between appropriate and inappropriate behaviors.
- Recognize personal boundaries, rights, and privacy needs.
- Understand the need for self-control and how to use it.
- Understand the need for rules.
- Demonstrate cooperative behavior in groups.
- Learn how to make and keep friends.
- Recognize, accept, and appreciate diversity.
- Be able to respectfully and assertively communicate thoughts, wants, and needs.
- Understand the link between choices and consequences.
- Identify solutions to problems.
- Develop healthy coping skills for feelings.
- Demonstrate the ability to problem solve and when to seek help.
- Demonstrate knowledge of personal information.

Implementation of Personal/Social Development

- Individual counseling
- Group counseling (as needed, if possible)
- Conflict resolution
- Crisis Intervention and evaluation
- New student orientation
- Referrals to outside agencies
- Student support team
- Parent/teacher consultation
- Attendance monitoring

School Counseling Department Organizational Chart



Counseling Staff

Amy Decker

adecker@acsapps.com

Matthew McAneney

mmcaneney@acsapps.com

607-276-6562